



**“EDUCATION IS THE MANIFESTATION OF
THE PERFECTION ALREADY IN MAN.”**

SESSION 2025-26





Welcome

WELCOME

A gracious and heartfelt welcome to all of you to the Academic Session 2025-26 at Bal Bharati Public School, Manesar.

As we prepare to embark on the new school year 2025-26, we're excited to welcome you onboard. Together, let's create a rewarding and enjoyable learning journey for your ward. Your support is invaluable in fostering a conducive atmosphere for growth and success. Here's to an enriching year ahead!



Bal Bharati
PUBLIC SCHOOL
M A N E S A R

VISION & MISSION



Bal Bharati
PUBLIC SCHOOL
M A N E S A R



HARSH KUMAR
(Principal)



AKANKSHA SEHGAL SETIA
(Vice Principal)



Vision



"To strive for better and better, not resting on one's laurels; seek solutions not excuses, deliver results and serve the community by providing quality education."





Mission



Bal Bharati Public School run by the **Child Education Society** is committed to inspire students to achieve the highest standards of intellectual, social, emotional and moral development through multi-faceted approach to education.

We promote a supportive and conducive environment for students to interact with and learn from their peers, teachers, parents and the community.



Mission



We aim to prepare students to become:

- Disciplined, confident, resilient and caring
- Equipped with the right values, knowledge and skills
- Future-ready and life-long learners
- Enlightened and engaged citizens of a global society



Mission



In addition to this we aim :

- To develop scholastic personalities and impart knowledge to maximize skills and competencies.
- To impart wisdom that transforms mere knowledge into a meaningful initiative and enterprise for a harmonious and prosperous society.
- To provide holistic education to society as a whole without prejudice or discrimination.



Mission



- Equip the child to meet all challenges – social, moral and intellectual and comprehend human values.
- To make students responsible, law abiding and enlightened citizens of a global society.
- Instill traits of team work, empathy, patience, perseverance and respect for elders and mentors.
- To ensure sensitivity and commitment towards environment and all beings to save the planet for future generation.



Bal Bharati
PUBLIC SCHOOL
M A N E S A R



MINAKSHI AMAL RAKESHI
Coordinator VI - VIII
Minakshi.amalrakeshi@mn.balbharati.org



Bal Bharati
PUBLIC SCHOOL
MANESAR

KNOW YOUR CLASS TEACHERS



Mrs. Nikita
VI A



Mrs. Parul Singla
VI B



Mrs. Divyangi Goswami
VI C



Bal Bharati
PUBLIC SCHOOL
MANESAR

KNOW YOUR CLASS TEACHERS



Mrs. Jyoti Sharma
VI D



Mrs. Bhawana Mishra
VI E

KNOW YOUR CLASS TEACHERS

CLASS	NAME	EMAIL ID
VI A	MS. NIKITA BHAYA	Nikita.bhaya@mn.balbharati.org
VI B	MS. PARUL SINGLA	Parul.bbbs@mn.balbharati.org
VI C	MS. DIVYANGI GOSWAMI	Divyangi@mn.balbharati.org
VI D	MS. JYOTI SHARMA	Jyoti.sharma2@mn.balbharati.org
VI E	MS. BHAWANA MISHRA	bhawana.mishra@mn.balbharati.org

KNOW YOUR TEACHERS

SUBJECT	NAME	EMAIL ID
ENGLISH	Ms. BHAWANA MISHRA	bhawana.mishra@mn.balbharati.org
MATHS	Ms. PARUL SINGLA/ Ms. PUSHPA YADAV	parul.bbbs@mn.balbharatii.org pushpa.yadav@mn.balbharati.org
SCIENCE	Ms. DIVYANGI GOSWAMI	divyangi@mn.balbharati.org
S.St.	Ms. JYOTI SHARMA/ Ms. JYOTI PAHUJA	Jyoti.sharma2@mn.balbharati.org jyoti.pahuja@mn.balnharati.org
SANSKRI T/FRENCH	Ms. KAVITA RANI Ms. MINAKSHI AMAL RAKESHI	kavita.rani@mn.balbharati.org minakshi.amalrakeshi@mn.balbharati.org
HINDI	Ms. Sunita	Sunita.tgt@mn.balbharati.org

KNOW YOUR TEACHERS

SUBJECT	NAME	EMAIL ID
IT	Ms. NIKITA BHAYA	Nikita.bhaya@mn.balbharati.org
ARTS	Mr. SANJAY	sanjay.kumar@mn.balbharati.org
MUSIC	Ms. PUSHPA BHARDWAJ	pushpa.bhardwaj@mn.balbharati.org
INSTRUMENTAL	Mr. MILAN	milan.kumar@mn.balbharati.org
SPORTS	Ms. KAVITA	kavitas@mn.balbharati.org
FINANCIAL LITERACY	Ms. SHIMPY ANAND	Shimpy.taneja@mn.balbharati.org



MEETING TIMINGS

Designation	Email	Visiting Hours
Mr. Harsh Kumar Principal	harsh.kumar@balbharati.org	9:30 AM To 10:30 AM (All working days)
Ms. Akanksha Sehgal Setia Vice Principal	akankshasehgalsetia@mn.balbharati.org	9:00 AM To 11:00 AM (All working days)
Mrs. Minakshi Amal Rakeshi Class Coordinator	Minakshi.amalrakeshi@mn.balbharati.org	7:30 AM To 8:30 AM (First and Third Saturday)

*Parents are requested to schedule an appointment in advance via email or by informing the front desk.

☎ 0124-2291331, 9212808008

MEETING TIMINGS



Designation	Email	Visiting Hours
Class Teacher	Mentioned in earlier slides	9:00 AM To 11:00 AM (First and Third Saturday) with prior intimation to the class teacher & On Scheduled PTM Days
Mr. Sanjay Transport Incharge	Sanjay.grewal@mn.balbharati.org	7:30 a.m – 11:30 a.m (All working days)
Mr. Satish Sharma Admin Officer	admin.officer@mn.balbharati.org	8:30 a.m – 11:30 a.m (All working days)
Ms. Rachna Verma Accounts Assistant	rachna.verma@mn.balbharati.org	8:30 a.m – 11:30 a.m (All working days)
Ms. Nisha Sharma School Counsellor	nisha@mn.balbharati.org	9:00 AM To 11:00 AM (First and Third Saturday) with prior intimation to the coordinator/front desk and on Scheduled PTM Days

LINE OF COMMUNICATION



- WhatsApp broadcast group has been created by the respective class teacher for time to time information and updates.
- For any communication, the first point of contact will be the class teacher through email or call between 6 pm to 7 pm (except the case of any emergency).
- You may also mail your concern to the Coordinator/Vice Principal/Principal.



IMPORTANT INFORMATION

To maintain a conducive learning environment and ensure the safety and focus of our students, we kindly request your cooperation with the following guidelines regarding communication during school hours:

Prohibition on Mobile Phone Use:

Please refrain from calling or texting teachers directly during school hours, as they are not permitted to carry mobile phones.

Communication Channels:

For non-urgent matters or inquiries, we encourage you to communicate through the designated communication channels, such as emails (bbpsmn@balbharati.org), or phone calls (9212808008/ 0124-2291331).

Emergency Situations:

In case of an emergency involving your child, please contact the school office (9212808008/ 0124-2291331) or reception immediately. Our administrative staff will ensure that your message is relayed promptly to the appropriate personnel.

Early Pick ups:

Early pickups are not allowed except in cases of family or medical emergencies, or VISA appointments.

Lunch box

For safety and security reasons, we kindly request that **you do not drop off your child's lunch box** at the school gate. Instead, please ensure that your child carries their lunch box with them to school in the morning.

⊘ Parents are kindly requested **not to provide any monetary assistance** to bus drivers, conductors, or support staff (didis/ayas).

SCHOOL TIMINGS

7:30 AM TO 1:30 PM (Summers)

8 AM to 1.30 PM (Winters)(From DECEMBER 1st onwards)

(Monday to Friday)

First & Third Saturday: Sports and Co-Curricular activities(Buses will ply)

Note: Second and Fourth Saturdays would be an off for the students.

Be regular in attendance and never be late to the school.

School gate will be closed after 7.30 am.

BE PUNCTUAL!

CLASS TEST SCHEDULE & GUIDELINES

- A class test (one subject) will be conducted every **Wednesday** for students of **Classes 6-12**, excluding language subjects.
- Language subject tests will be held on **one Monday per month**.
- Students must maintain:
 - **Classes 11-12:** A dedicated **Class Test Register**.
 - **Classes 6-10:** **Thin notebooks** for each subject.

CLUB ACTIVITIES AND PROGRAMS

- **Optional Programs (On Working Saturdays)**

Students can choose **one** of the following options:

An in-house club

- Students can **choose** one club to join.
- **Limited seats** available (First-Come, First-Serve basis).
- A form for registration will be shared soon.

or

The following programs are through outsourced agencies and require registration

1. Skill Club (Create Lab)
2. Astronomy Club (SPACE Group)

CLUBS
INTERACT CLUB
COMPUTER CLUB
SCIENCE CLUB
INNOVATION and SIC CLUB
DRAMA and PHOTOGRAPHY CLUB

CLUB ACTIVITIES AND PROGRAMS

Additionally,(Mandatory)

A total of **four different clubs** will be attended over the entire session by the students of classes 6-9 . Club activities will be done on every Friday during the school hours.

- Guardian Squad** (Emergency Preparedness)
- Inkspire** (Literary)
- Elevate Hub** (Skill Building)
- Heritage Harmony** (Cultural)

IMPORTANT INFORMATION REGARDING SPORTS ACTIVITIES

- **Money Collection for Sports Activities**
 - Parents are kindly requested **not** to give any money directly to the Games In charge or the Sports Department for any games-related activities.
 - All information regarding contributions will be communicated through **formal circulars**.
- **Extra Coaching During Holidays**
 - During holidays or vacations, the school will **organize additional coaching sessions** for various sports and games.
 - The **detailed schedule** and further information will be provided by the **respective class teachers**.
 - **Transportation** for these sessions must be arranged by **parents**.
- **Personal Sports Participation:**
 - If your child is participating in any games independently outside school, please inform the Class Teacher.
 - Share any laurels or achievements won by your child with the Class Teacher.
- The **Sports Department** will provide updates on upcoming tournaments through the **Class Teacher to all the students**.

CALENDER AND CYBER POLICY

CALENDAR

2025-26

CYBER POLICY

The school ensures experiential and holistic learning through art-integration and various innovative teaching pedagogies

HOMEWORK ASSIGNMENT

**HOMEWORK ASSIGNMENT SCHEDULE
WILL BE SHARED SOON.**



EXPECTATIONS ACROSS ALL ACADEMIC SUBJECTS

- **FOCUS ON NEAT HANDWRITING.**
- **NEAT PRESENTATION OF WORK.**
- **FOLLOW SUBJECT SPECIFIC FORMATTING INSTRUCTIONS.**
- **TIMELY SUBMISSION OF WORK.**
- **GO THROUGH THE CORRECTED WORK RETURNED BY EVERY TEACHER.**
- **DO CORRECTIONS REGULARLY MENTIONED BY THE TEACHERS.**

IMPORTANT INFORMATION

Please click on the given button to access the information:

**EXAM
SCHEDULE**

**PTM
SCHEDULE**

PROMOTION POLICY (CLASS VI-VII)

NOTEBOOK CHECKING SCHEDULE



NEW INITIATIVES

SCOUT & GUIDE CAMP

The Scout & guide project is a new initiative, aimed at providing students with an opportunity similar to the NCC (National Cadet Corps) certification. It focuses on character building, leadership, & discipline among students, much like the NCC.

NEW INITIATIVES

Key features of the Scout & guide project :

1. **Training in Various Skills** – Covers physical fitness, social service, patriotism, and leadership.
2. **Encourages Discipline and Teamwork** – Helps students develop qualities of a responsible citizen.
3. **Participation in Extracurricular Activities** – Involves drills, social service projects, and outdoor training.
4. **Enhances Career Opportunities** – Can be beneficial for students applying to higher education and jobs where NCC certificates are considered
5. There will be three camps in a year in the school. Duration of one camp will be three days, in school timings only.

CO-CURRICULAR ACTIVITY DETAILS

Please click on the given button to access the information:

ACTIVITY DETAI
LS



CODE OF CONDUCT

Students have the right to feel safe in the school, learn in a challenging environment to the best of their abilities, be treated with respect by other students and teachers and be listened to. However, they must also adhere to the code of conduct of the school.

*** Click on the button to know the code of conduct.**

CODE OF CONDU
CT




KEEP IT SIMPLE



- **No junk food.**
- **Please send a healthy snack daily.**
- **Carry your own water bottle and drink plenty of water.**
- **Always carry your fruit box .**
- **Simple school bags and stationery to be brought to the school.**

Food Distribution Policy

Students are not allowed to distribute **chocolates, chips, lollipops, sour candies, or aerated drinks** on any occasion.

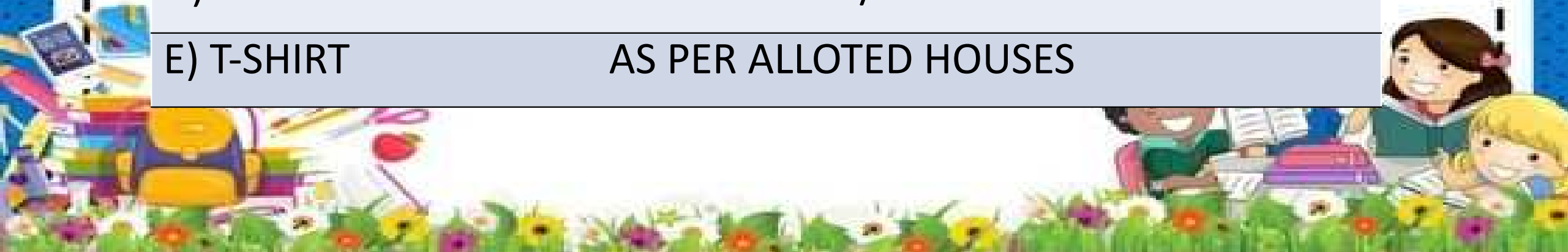
Instead, they are encouraged to **bring a planter** to school and nurture it throughout the year. 

SCHOOL UNIFORM

HOUSE T-SHIRTS TO BE WORN ON EVERY MONDAY AND THURSDAY BY THE STUDENTS OF THE MIDDLE DEPARTMENT

SUMMER (BOYS)

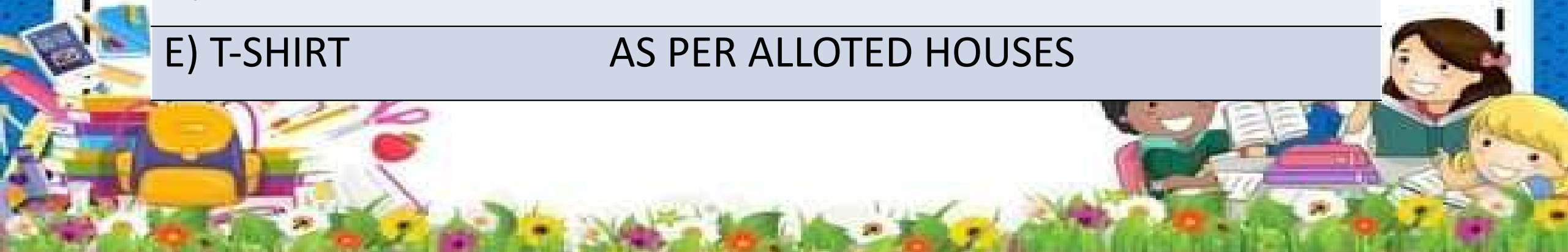
A) T-SHIRT	SKY, H/S WITH LOGO
B) TRACK PANTS	NAVY
C) SOCKS	NAVY WITH SKY STRIPES
D) SHOES	BLACK SHOES/BLACK SPORTS SHOES
E) T-SHIRT	AS PER ALLOTTED HOUSES



SCHOOL UNIFORM

SUMMER (GIRLS)

A) T-SHIRT	SKY, H/S WITH LOGO
B) TRACK PANTS	NAVY
C) SOCKS	NAVY WITH SKY STRIPES
D) SHOES	BLACK SHOES/BLACK SPORTS SHOES
E) T-SHIRT	AS PER ALLOTTED HOUSES





SCHOOL UNIFORM

WINTER (BOYS)

A) T-SHIRT	SKY, F/S WITH LOGO
B) TRACK PANTS	NAVY
C) SOCKS	NAVY WITH SKY STRIPES
D) SHOES	BLACK SHOES/BLACK SPORTS SHOES
E) PULLOVER	SKY NAVY SLEEVELESS
F) JACKET	SKY NAVY HOODIE





SCHOOL UNIFORM

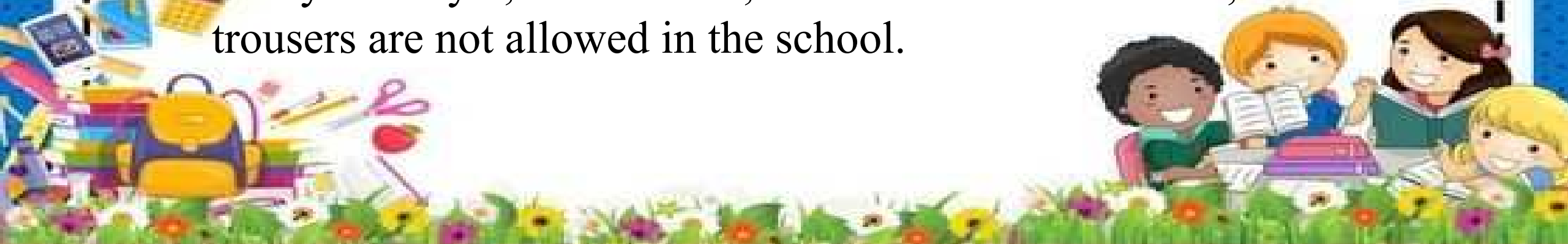
WINTER (GIRLS)

A) T-SHIRT	SKY, F/S WITH LOGO
B) TRACK PANTS	NAVY
C) SOCKS	NAVY WITH SKY STRIPES
D) SHOES	BLACK SHOES/BLACK SPORTS SHOES
E) PULLOVER	SKY NAVY SLEEVELESS
F) JACKET	SKY NAVY HOODIE



SCHOOL UNIFORM

- Come to school well-groomed and in proper school uniform with shoes well-polished. Boys should get a regular hair cut and girls should keep their hair neatly tied or use hairband.
- Colored caps, slacks, jackets gloves etc. are not to be worn along with the school uniform.
- Fancy hairstyle, accessories, narrow bottom trousers, low waist trousers are not allowed in the school.



HOUSE SYSTEM

Four Houses by the name of **Honour, Faith, Wisdom and Justice** have been instituted at Bal Bharati, Manesar. House T-shirts to be worn on every Monday and Thursday by the students of the middle department

The staff and students of the entire school are associated with any one house.

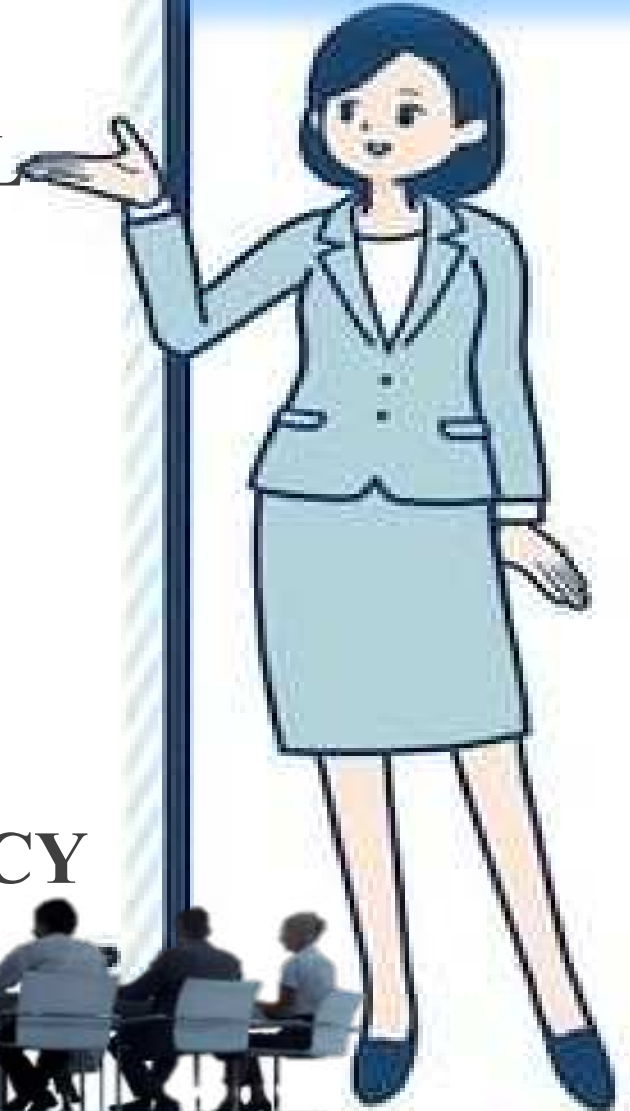
To broaden the range of co-curricular activities and provide students with ample opportunities to demonstrate their talents, the school organizes Inter-House activities regularly.

Each child is instilled with the moral values represented by their respective 'House', fostering a deep sense of allegiance and inspiring passionate participation in all activities. Every House is identified by a specific color.



COMMITTEES @ BBPSMN

- **GRIEVANCE REDRESSAL CELL**
- **SEXUAL HARASSMENT PREVENTION CELL**
- **ANTI-BULLYING CELL**
- **POCSO - PREVENTION OF CHILD SEXUAL OFFENCE**
- **CYBER SAFETY AND SECURITY CELL**
- **SCHOOL SAFETY AND SECURITY CELL**
- **DISCIPLINE AND SUBSTANCE ABUSE POLICY**



Note: For any query pl. contact the Vice Principal or the School Counsellor.





ENVIRONMENTAL AWARENESS

- **No foil/cling film is allowed**
- **Single use plastic is not allowed**
- **Use steel tiffins/water bottles**
- **Save electricity and water.**

A decorative border of watercolor flowers in shades of pink, orange, and yellow, with green leaves and stems, framing the central text.

thank you